

SUNDAY, JANUARY 29

8:30 A.M. Morning Worship
9:00 A.M. Jail Ministry
9:30 A.M. Graham Oaks Bible Study
9:45 A.M. Bible Study
9:45 A.M. Relevate (Youth)
11:00 A.M. Morning Worship
11:00 A.M. Children's Church
12:00 P.M. Vacation Bible School Luncheon
3:00 P.M. Graham Oaks Worship Service
3:00 P.M. Garden Terrace Bible Study
6:00 P.M. Evening Worship

MONDAY, JANUARY 30

6:30 A.M. Men's Prayer Breakfast
8:00 A.M. Aerobics Class
8:00 A.M. Quilting
9:00 A.M. Mother's Day Out
10:30 A.M. Garden Terrace, Crafts
5:30 P.M. Aerobics Class
7:00 P.M. Bible Study: *Ever-Loving Truth*

TUESDAY, JANUARY 31

9:00 A.M. Mother's Day Out

WEDNESDAY, FEBRUARY 1

8:00 A.M. Aerobic Class
3:00 P.M. Graham Oaks Worship Service
3:15 P.M. Children's Choir School Pick-up
4:00 P.M. Garden Terrace Bible Study
4:15 P.M. Heaven's Angle Choir
4:15 P.M. Made for Praise Children's Choir
5:00 P.M. Family Meal
5:00 P.M. Acteens
5:45 P.M. GA's, RA's & Mission Friends
6:00 P.M. Voices from the Heart Choir
6:00 P.M. Preschool, Children & Adult Lesson Preparation
6:00 P.M. Handbells
6:30 P.M. COW—Jr. High Bible Study
7:00 P.M. COW—Joint Worship
7:00 P.M. Evening Bible Study
7:30 P.M. COW—High School Bible Study
7:45 P.M. Sanctuary Choir Practice

THURSDAY, FEBRUARY 2

9:00 A.M. Quilting Bee
3:00 P.M. Graham Living Center Bible Study

FRIDAY, FEBRUARY 3

8:00 A.M. Aerobic Class
1:30 P.M. St. Michael's Bible Study

TELEGRAPHAM (USPS – 583510)

POSTMASTER:

SEND ADDRESS CHANGES TO:

FIRST BAPTIST CHURCH

623 THIRD STREET

GRAHAM, TEXAS 76450

SECOND CLASS POSTAGE

PAID AT

GRAHAM, TEXAS

EXTENDED TIME

WORKERS

JANUARY 29, 2005

8:30a.m.:

11:00a.m.:

OUR CHURCH STAFF

Rev. James C. Hill ~ Pastor

Richard Segars ~

Education/Administration

Jerry Blake ~ Music/Media

Jeremy Wells ~ Youth/Activities

Gary Tull ~ Asst. to the Pastor

Chris Prather ~ Asst. to the Youth



The First Family...

We're Here for You!

TELEGRAHAM

623 Third Street, Graham, Texas 76450

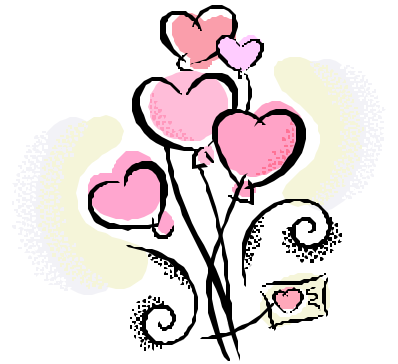
Vol. 56

January 25, 2006

No. 04

What's Happening in February

- 05 Youth—Super Bowl Party
Stewardship Meeting
Deacon's Meeting
- 07 YAHA's Meet
- 09 Salt Fork Associational Doctrinal Clinic (Dr. James Semple, speaker)
- 10 Adult 4-Garvey Class Social
- 11 Choir travels to Dallas for Gaither Concert
Parents Night Out
- 12 Adult 4 Breakfast
Adult Directors Meet
Adult 2 lunch at Wildcatter
- 13 Widow's Valentine Banquet
- 14 Prime Time Singers Begin
XYZ, followed by Women's Ministry
- 16 Jr. High D-Now Kick off Supper
- 17-18 Jr. High D-Now Week-end
- 19 Voices from the Heart sings in Wichita Falls
- 20-24 Mississippi Mission Trip
- 20 Discovery Zone
- 21 Salt Fork Associational Wild Game Dinner, Seymour
- 24 4th & 5th Grade GA Lock In



Remember all the other opportunities that are offered on a weekly basis

INCREASING YOUR ENROLLMENT

Sunday School teaching units with increasing enrollment experience a sustained long-term increase in attendance. That means that more people are learning from God's Word. Enrolling new members does not always mean the ongoing enrollment will increase. Sunday School leaders and teachers will want to remember that on any given week, members can be dropped from the class or department roll. This is not taken lightly and only happens after much consideration. Class and department members are dropped for a variety of reasons, joining another church, moving or upon the members' request. It is possible to have 5 new members and for 3 members to be dropped giving the teaching unit an enrollment increase of 2. Simply put we need to remember to keep the front door open and watch the back door. Take a look at the enrollment ledger, is your enrollment increasing? Reaching people for Bible Study and increasing your on going enrollment, they both go hand in hand.

PARENT'S NIGHT OUT

February 11, 5pm-9pm
\$7 per child, max. \$14 per family
Additional: Pizza Dinner \$2.50
Call Susan or the office to make your reservations

FAMILY SUPPER

Wednesday, February 1, 5:00pm
Chicken Supreme, Cream Potato, Broccoli,
Salad, Desert, Drinks

ATTENDANCE MARKING SHEET

The Sunday School marking sheet is the class and department central source for the names of those enrolled in the classes and departments. Teachers and leaders will want to consider providing time for class members to take a look at the class roll just to help remind the leadership team who is enrolled in the class or department. We all need reminders. The Sunday School attendance-marking worksheet is that reminder tool.

VACATION BIBLE SCHOOL

First Planning Meeting
January 29, Noon

Introducing the 2006 Vacation Bible School materials. This year it's the Arctic Edge: Where Adventure Meets Courage. Age group materials and helps will be available to workers. Some departments are already enlisting workers. Those who have worked or would like to work in V.B.S. will want to be present.

To make meal reservations simply contact the church office by phone or email at info@fbcgraham.com.

Adult 4—Garvey Class
Friday, January 27, 6:00pm

GREAT OPPORTUNITY

2 Typists needed for
Sunday and Wednesday.
Contact Jim Perryman or
the church office

WIDOW'S BANQUET

Monday, February, 13, 6:00pm
The Staff, the Deacons and the First Family wish to honor our widow ladies with an evening of entertainment and delicious food. The deacons would like to make this a special evening by picking each lady up at their homes. Ladies--Please call the church office and make your reservations.

NEW OPPORTUNITIES

A Woman's Heart

Thursdays, Jan. 25-- 11:00am

The Ever-Loving Truth

Mondays, Jan. 30-- 7:00pm

Discovering Gods Will

Monday, Feb. 6

(Merrill Gardens)—5:30pm

Discovery Zone

Mondays, Feb. 20 & Mar 20

SYMPATHY

Rev. & Mrs. James C. Hill, along with the First Family, extend Love & Sympathy to:

Families of Charlotte Rowe
Scott & Padgett Smith & families in
the death of his grandfather, L. E. Trayler
Families of Glenda Eustace

SUNDAY SCHOOL REPORT BIBLE STUDY AT FBC

January 22, 2006

Preschool	35
Children	48
Youth	71
Special Ministry	22
Adults	310
Totals	486
Men's Prayer Breakfast	34
Sharing Hope Ministries	25
Graham Oaks, Wed.	19
Garden Terrace, Wed.	/
St. Michael's Estate, Fri.	10
Graham Oaks, Sun., PM	16
Garden Terrace, Sun., PM	10
Made for Praise Choir	33
Heaven's Angel Choir	15
Jr. High School Choir, Wed.	16
Voices from the Heart	34
RA's	13
GA's	52
Mission Friends	7
Acteens	13
COW	146
Children's Church	11
Easter Lunch Bunch	36
Bible Study: <i>A Woman's Heart</i>	34
Bible Study: <i>The Ever-Loving Truth</i>	22
Bible Study: <i>Discovery Zone</i>	37
BIBLE STUDY AT MISSION	
Igelsa Bautista Jerusalem	24
TOTAL PARTICIPATION	1093

MEMBERSHIP

By Baptism 9. Allie Dragoo

THANK YOU NOTES

Thank you notes have been received this week from:

Joy Westerman